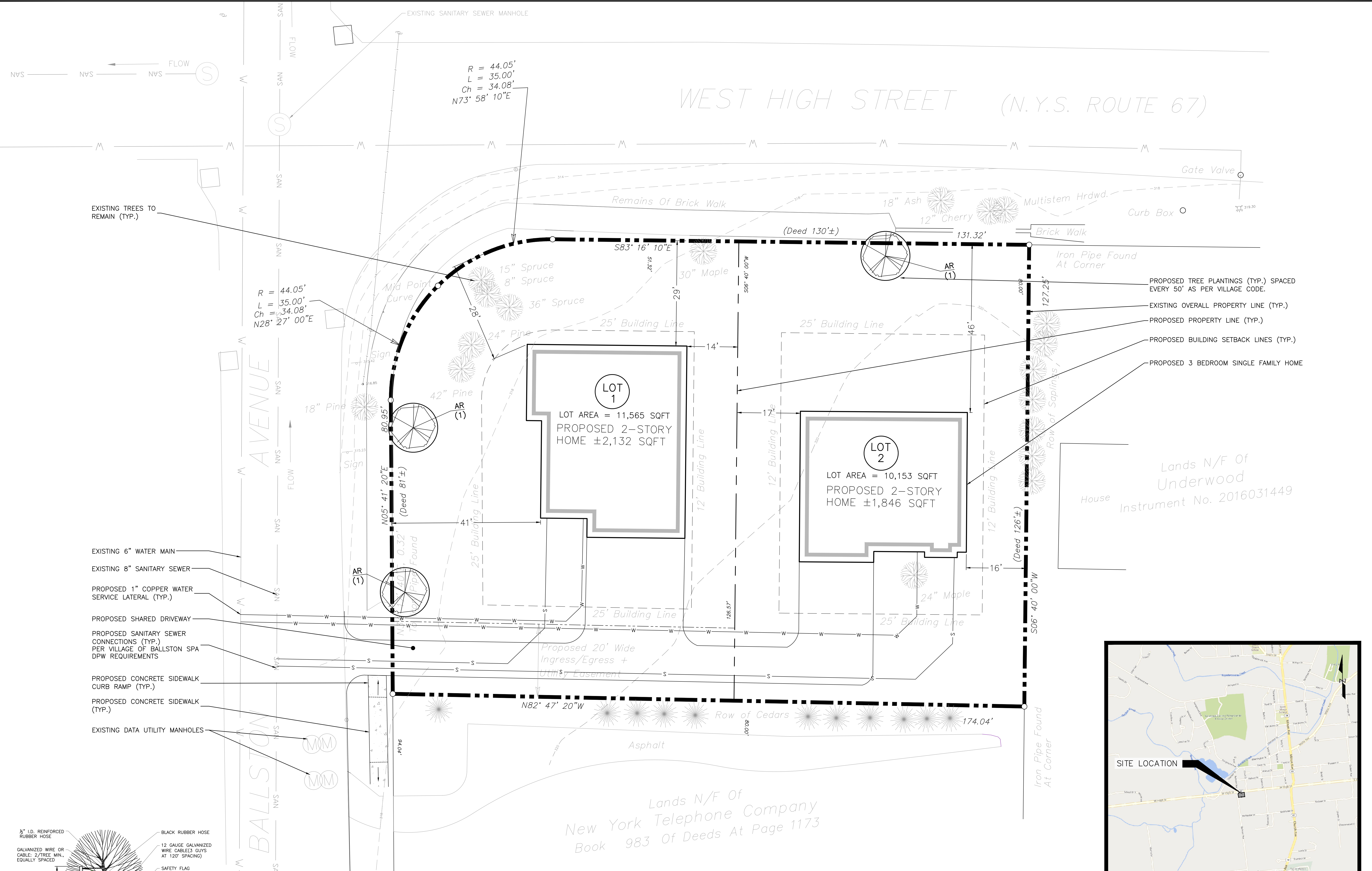
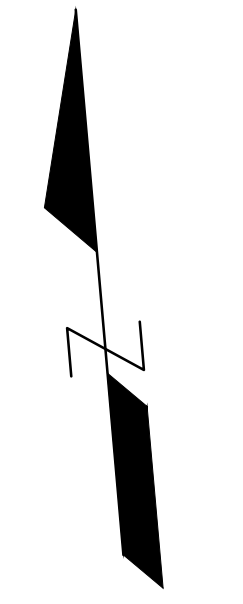


WEST HIGH STREET (N.Y.S. ROUTE 67)

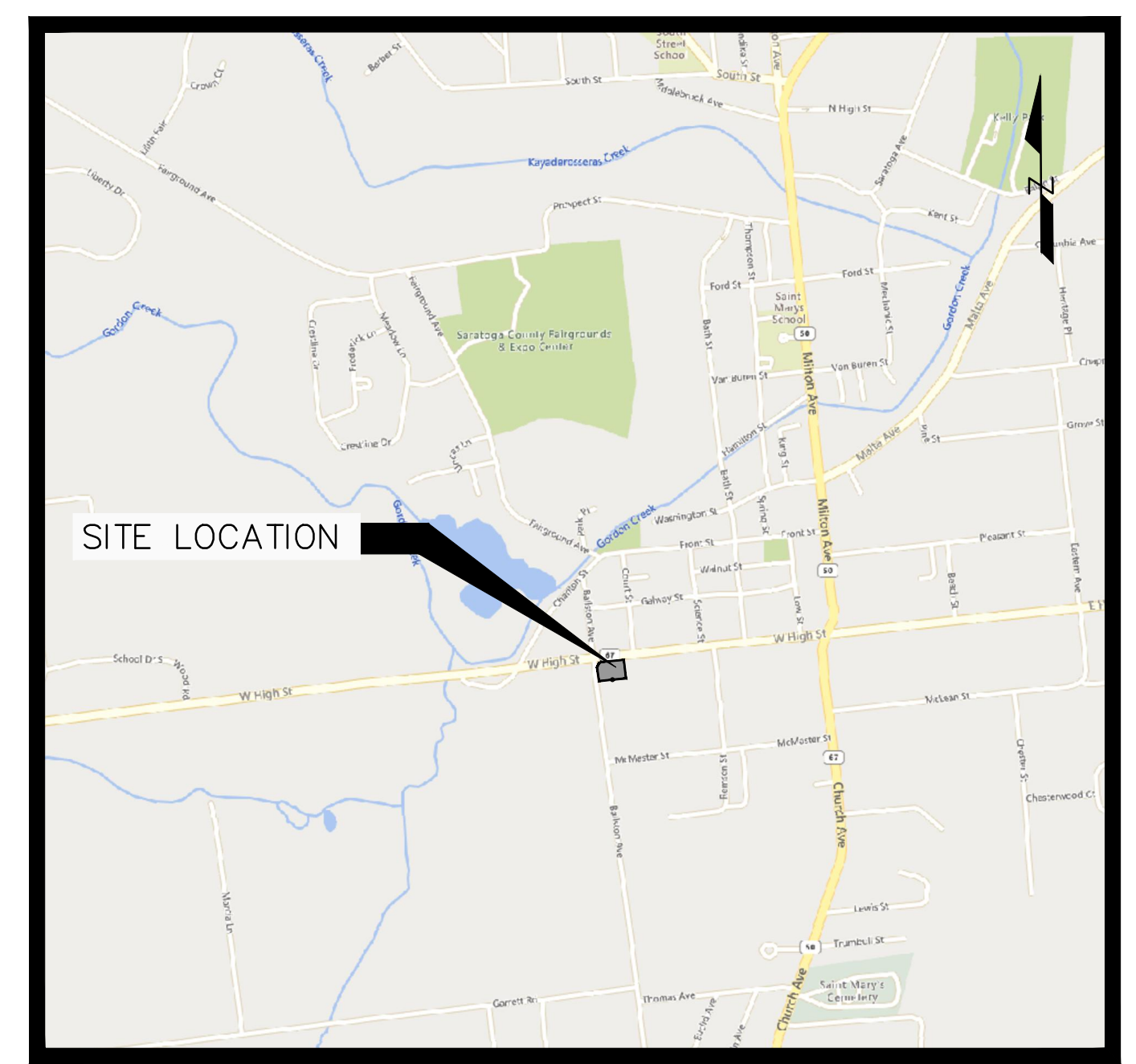
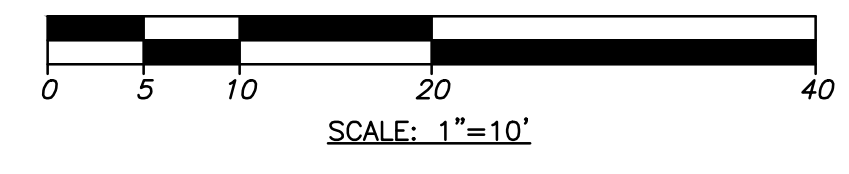


- PROPOSED TREE PLANTINGS (TYP.) SPACED EVERY 50' AS PER VILLAGE CODE.
- EXISTING OVERALL PROPERTY LINE (TYP.)
- PROPOSED PROPERTY LINE (TYP.)
- PROPOSED BUILDING SETBACK LINES (TYP.)
- PROPOSED 3 BEDROOM SINGLE FAMILY HOME

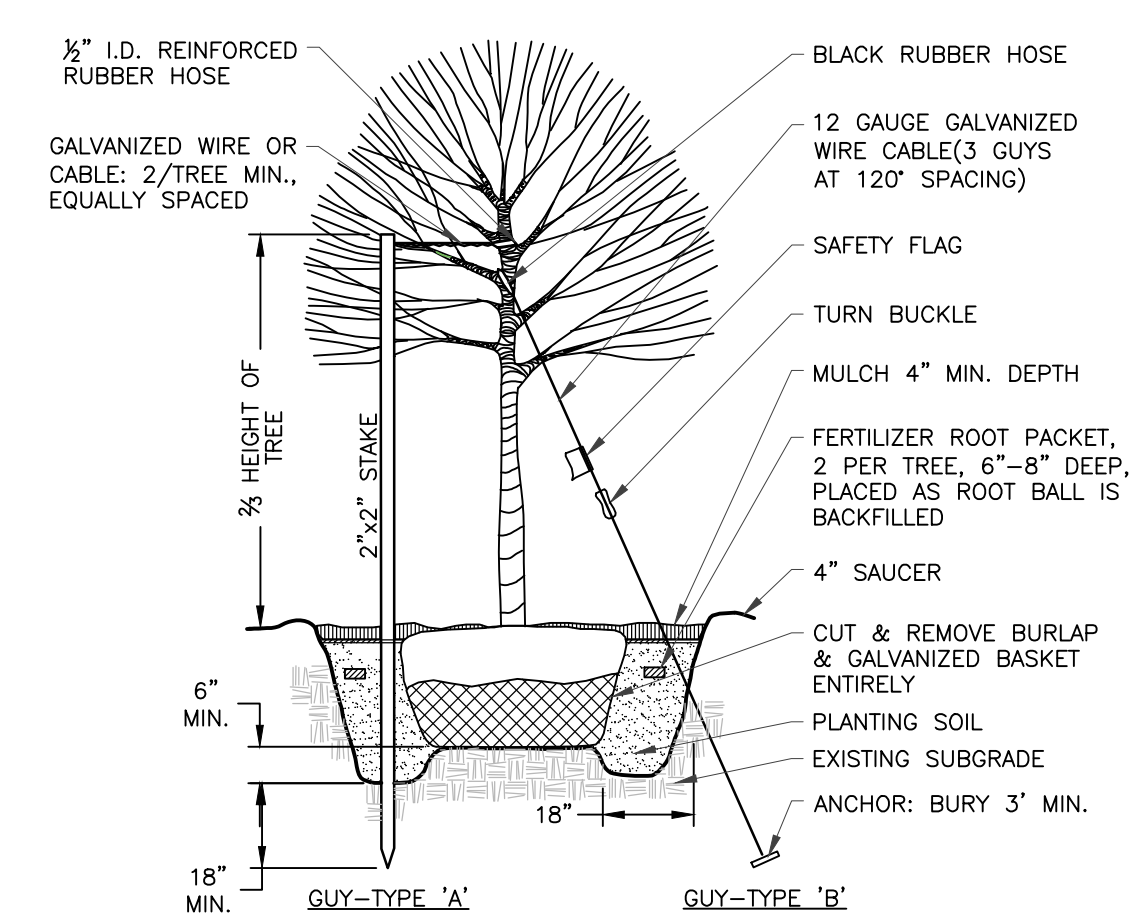
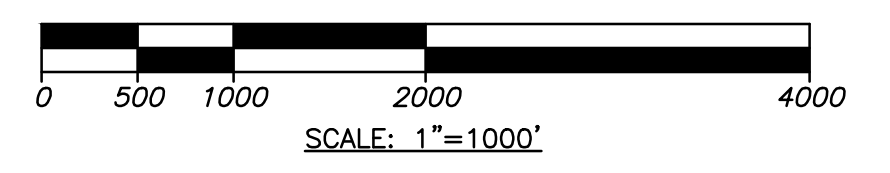
Lands N/F Of Underwood
Instrument No. 2016031449

Lands N/F Of New York Telephone Company
Book 983 Of Deeds At Page 1173

LAYOUT PLAN



SITE LOCATION MAP



DECIDUOUS TREE PLANTING
SCALE: NTS

PLANTING SCHEDULE: NOTE: IF REQUIRED LANDSCAPE MATERIALS AND/OR SIZES ARE NOT OBTAINABLE, SUBMIT PROPOSAL OF ALTERNATIVE MATERIALS TO OWNER/LANDSCAPE ARCHITECT FOR APPROVALS AND SUBSTITUTIONS.

ABRV	BOTANICAL NAME	COMMON NAME	QTY	SIZE	COND	SPACING	REMARKS
AR	ACER RUBRUM	RED MAPLE	3	3.5" CAL/14' HT	B&B	AS SHOWN	

WEB SOIL SURVEY SOIL NOTES:

- ACCORDING TO USDA WEB SOIL SURVEY THE SOILS ONSITE ARE 100% WINDSOR LOAMY SAND
- WINDSOR LOAMY SAND, HYDROLOGIC GROUP A, THE SURFACE LAYER IS DARK BROWN LOAMY SAND ABOUT 8 INCHES THICK. THE SUBSOIL IS ABOUT 16 INCHES THICK. IT IS YELLOWISH BROWN LOAMY SAND IN THE UPPER PART AND YELLOWISH BROWN SAND IN THE LOWER PART. THE SUBSTRATUM IS VERY PALE BROWN SAND TO A DEPTH OF 60 INCHES OR MORE.
- DEPTH TO SEASONALLY HIGH WATER TABLE: >6'

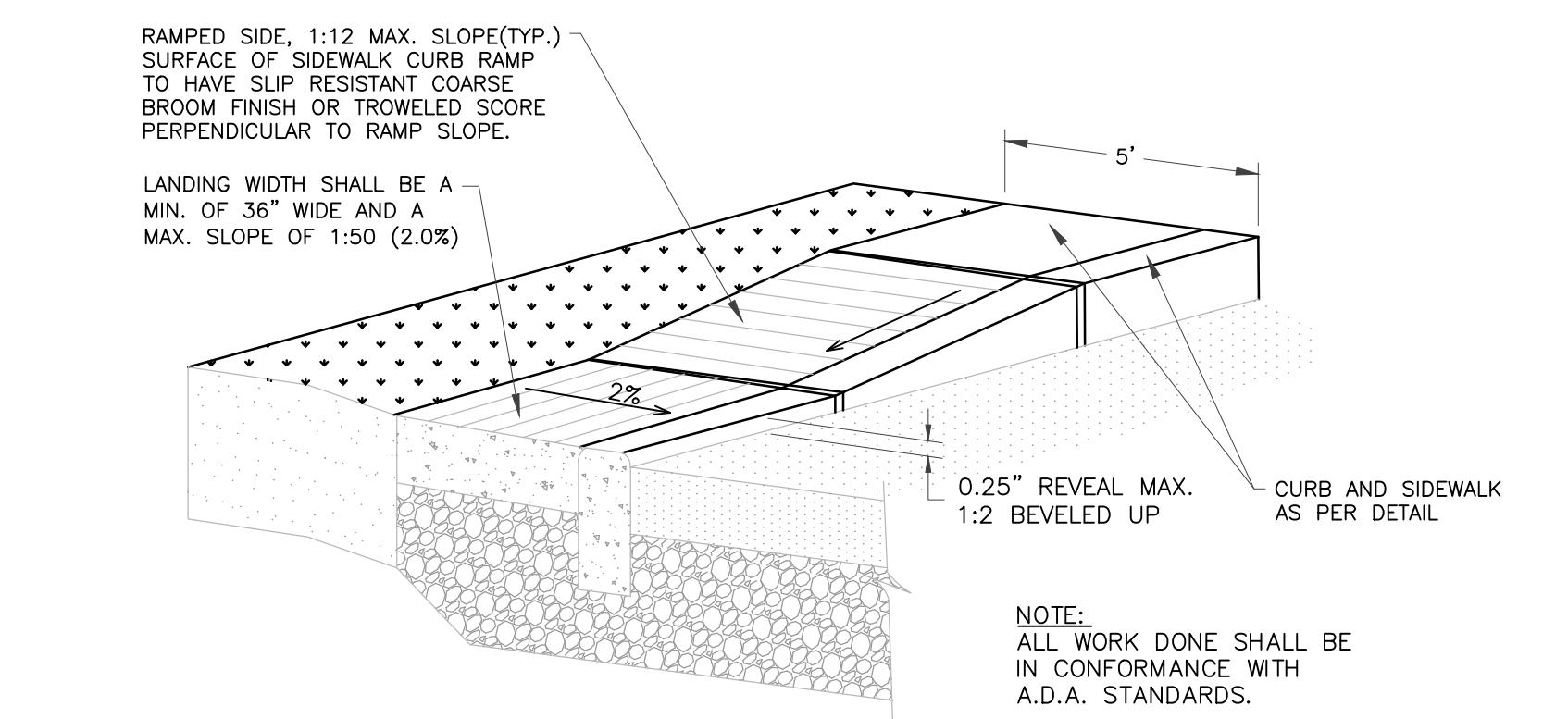
MAP REFERENCE:

- VILLAGE OF BALLSTON SPA SEWER SYSTEM MAP
- VILLAGE OF BALLSTON SPA WATER SYSTEM MAP
- SUBDIVISION LANDS OF FOX WEST HIGH STREET SURVEYED BY GILBERT VAN GUILDER WITH TOPOGRAPHY DATED: 5/22/2023

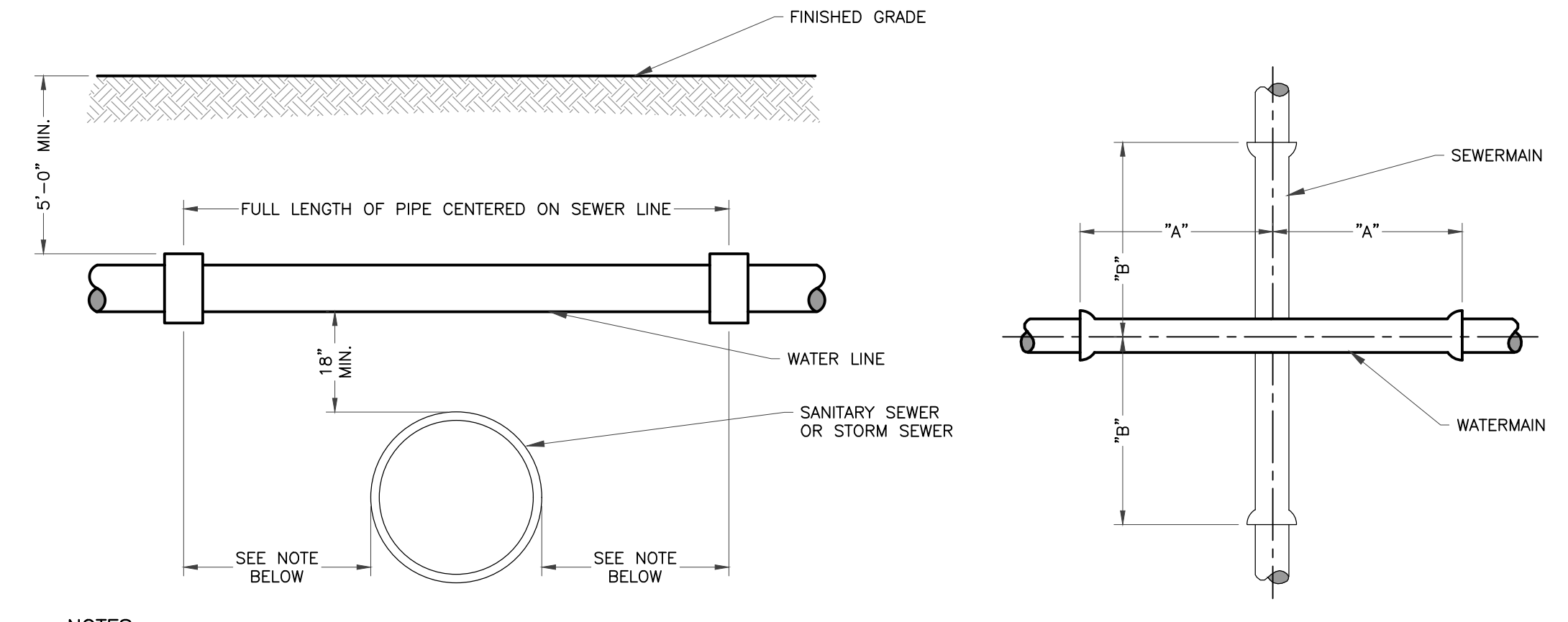
APPLICANT:
RICHARD FOX
1385 WEST AVE STREET
BALLSTON SPA, NY 12020

FOX SUBDIVISION SITE PLAN
 1385 WEST HIGH STREET, VILLAGE OF BALLSTON SPA, SARATOGA COUNTY, NEW YORK
 PRELIMINARY / NOT FOR CONSTRUCTION

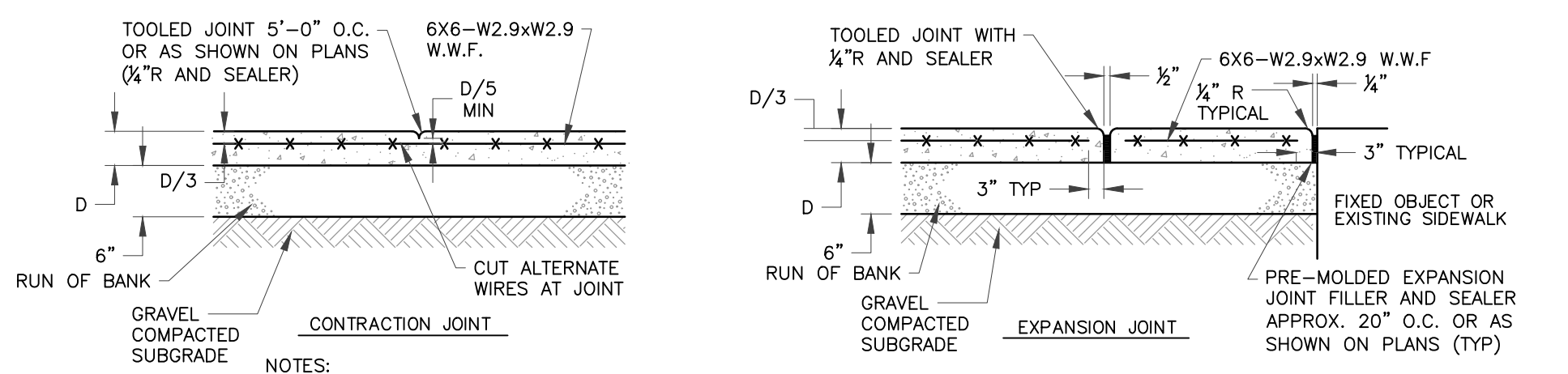




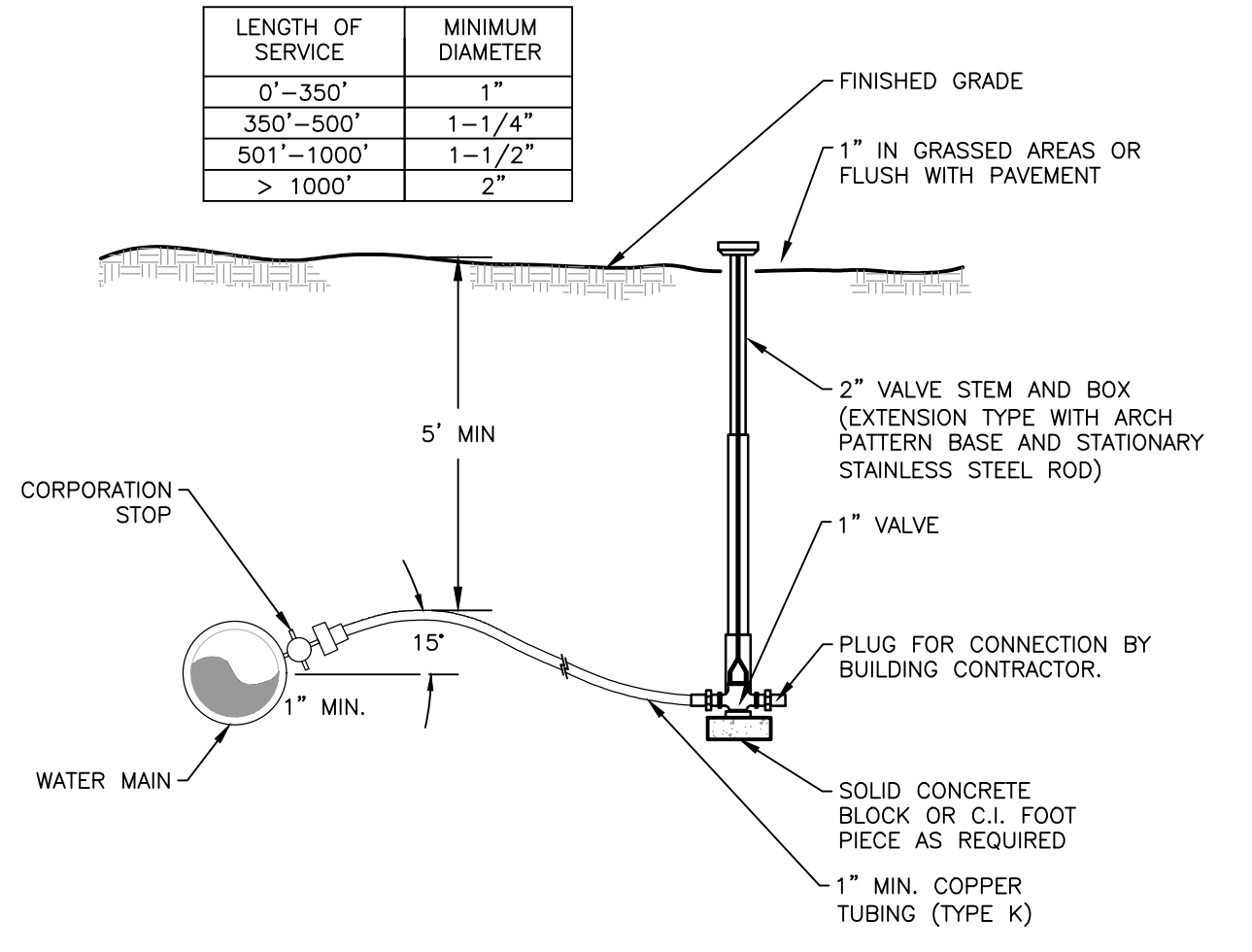
1 TYPICAL CURB RAMP SECTION
SCALE: NTS



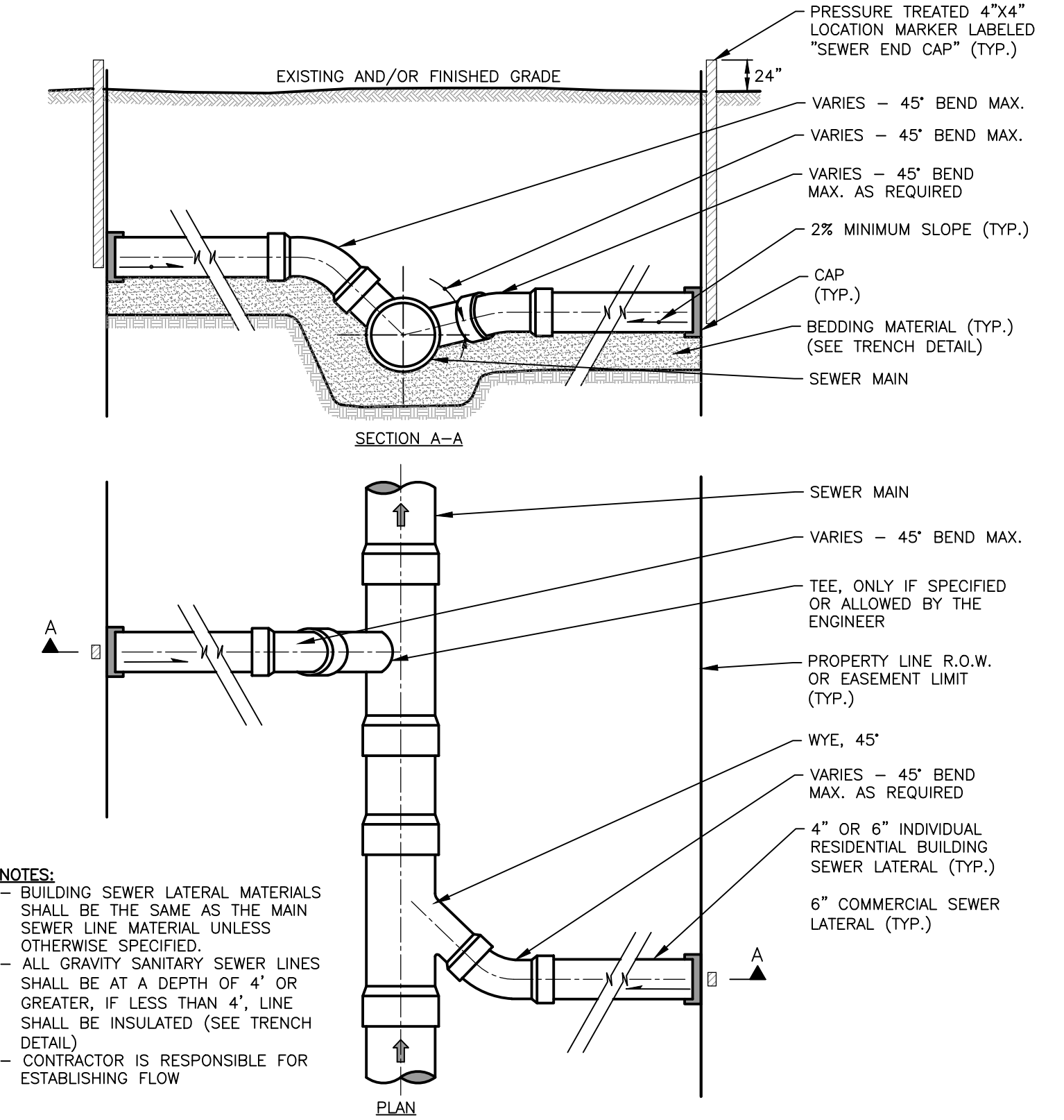
2 INSTALLATION OF WATER MAIN AT CROSSING WITH SANITARY OR STORM SEWER
SCALE: NTS



3 CONCRETE SIDEWALK
SCALE: NTS



4 COPPER WATER SERVICE PIPING DETAIL
SCALE: NTS



5 SANITARY SEWER SERVICE CONNECTIONS
SCALE: NTS

UNAUTHORIZED REVISIONS OR ADDITIONS TO THIS DOCUMENT ARE PROHIBITED. THE LOCATION OF THE INSUPPORT LANSING ENGINEERING, P.C.

PRELIMINARY / NOT FOR CONSTRUCTION

FOX SUBDIVISION SITE PLAN
 1385 WEST HIGH STREET, VILLAGE OF BALLSTON SPA, SARATOGA COUNTY, NEW YORK
 DATE: REVISION RECORD/DESCRIPTION
 LANSING ENGINEERING
 1510 BROADWAY, SUITE 301
 ALBANY, NY 12208
 (518) 869-6243