



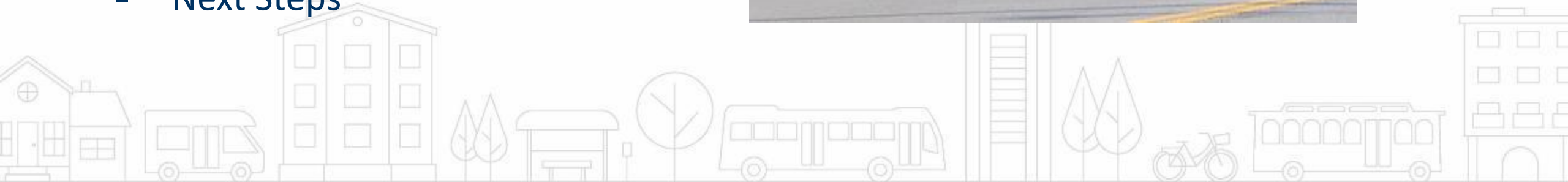
Ballston Spa Bus Shelter and Pedestrian Safety Improvements

*Village of Ballston Spa Trustees Meeting
June 12, 2023*



Agenda

- Background
- Existing Conditions
- Project Components
- Concept Designs
- Next Steps



Background

- CDTA designs/constructs infrastructure throughout Capital Region
- Part of continued investment in Saratoga County
- Based on requests from riders/residents/stakeholders
- Allows continued growth in transit ridership



Project Benefits



- New bus shelters for increased comfort



- Enhanced crossings and adjusted stop locations to improve pedestrian safety



- Additional landscaping where possible to beautify street



Existing Conditions



Project Components

Improved Transit Experience

- Adds 3 new bus shelters
- Curb extensions to fit shelters and maintain ADA/walkway clearance
- Add new bus shelter by Doubleday Woods

Improved Pedestrian Safety/Environment

- Shorten crossing distances with curb extensions
- Calm vehicular traffic
- Add landscaping where possible



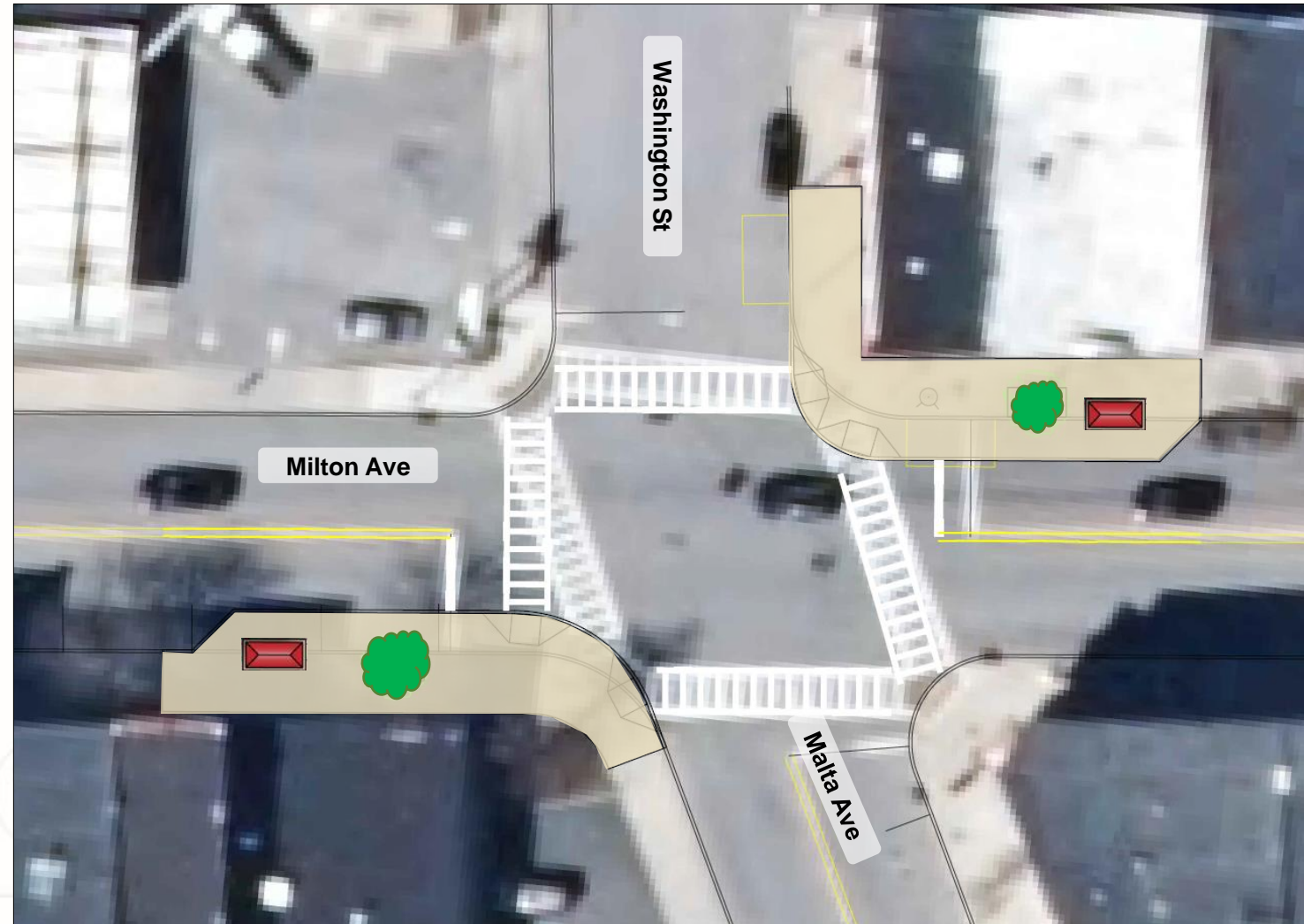
Concept Design: Milton & Malta Ave

Benefits

- Adds 2 bus shelters at highest ridership stops
- Curb extensions to fit shelters & shorten crossing distance
- Calms traffic turns from Milton Ave

Considerations

- Reclaim 3 parking spaces



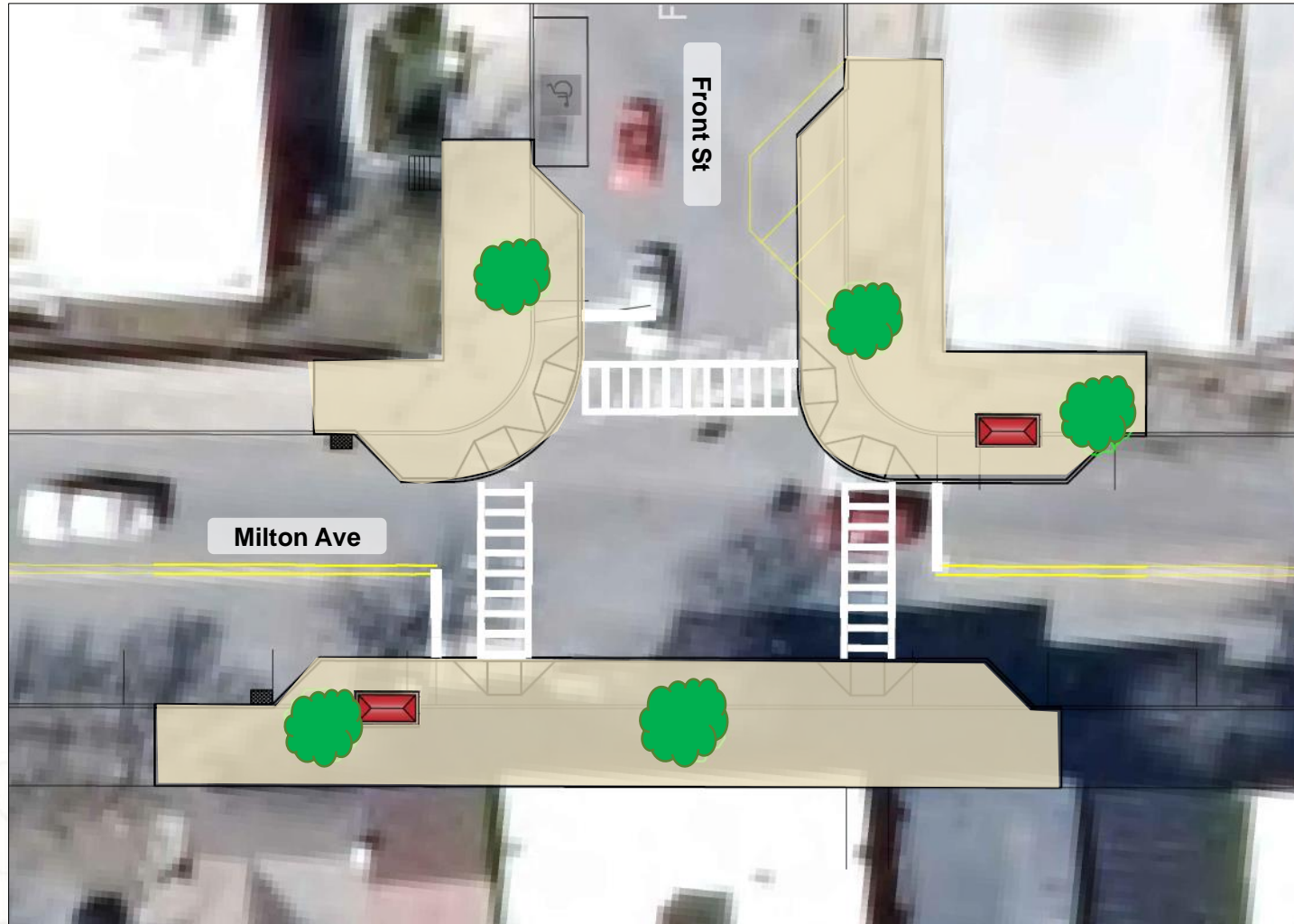
Concept Design: Milton & Front St (v1)

Benefits

- Adds 2 bus shelters at village center
- Relocates bus stop to intersection with less traffic impact
- Curb extensions at all corners of intersection / most traffic calming

Considerations

- Reclaim 5 parking spaces



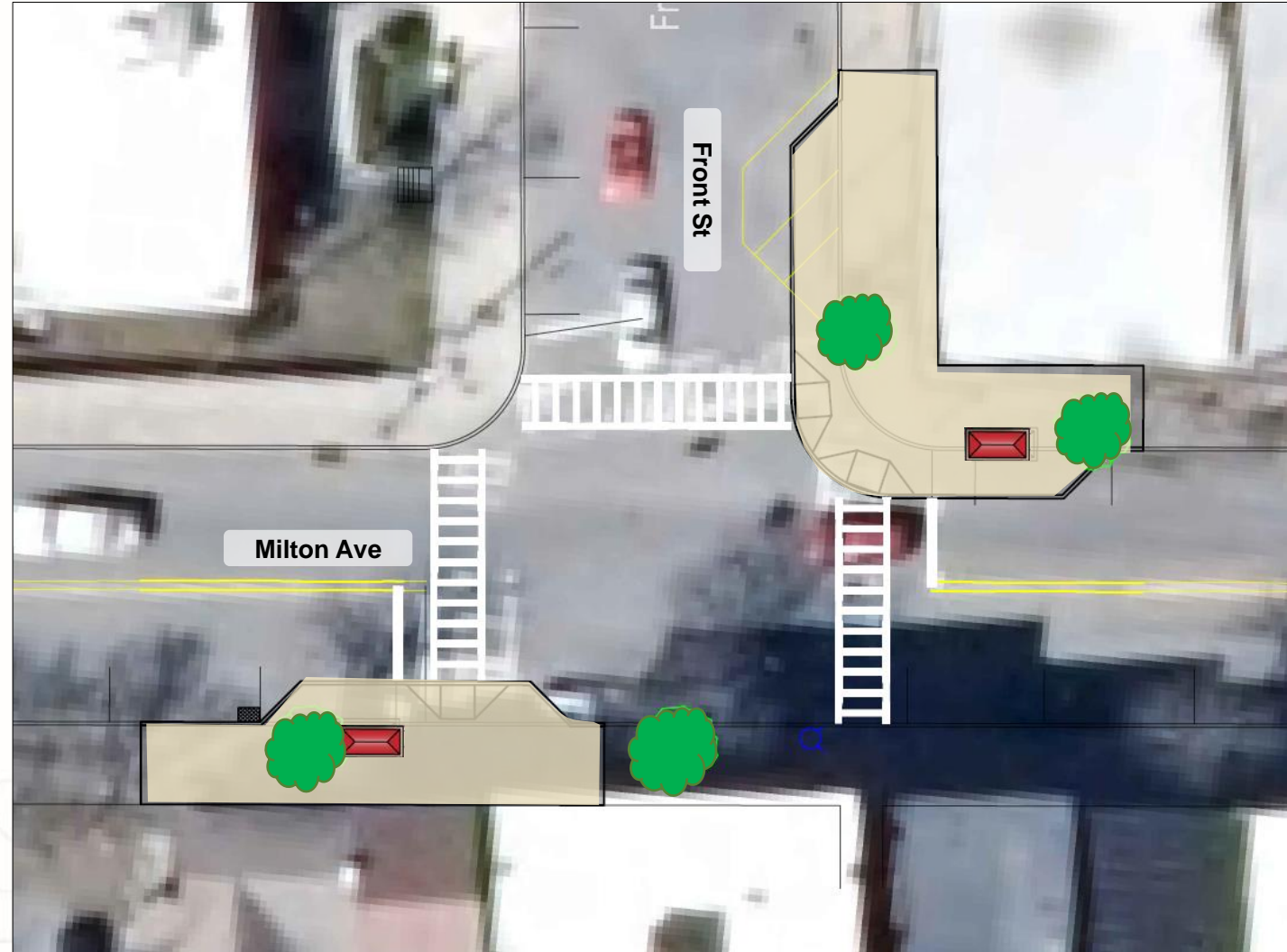
Concept Design: Milton & Front St (v2)

Benefits

- Adds 2 bus shelters at village center
- Relocates bus stop to intersection with less traffic impact
- Curb extensions at two corners

Considerations

- Reclaim 2 parking spaces
- Reduced traffic calming and ped improvement



Concept Design: Church & Doubleday Woods

Benefits

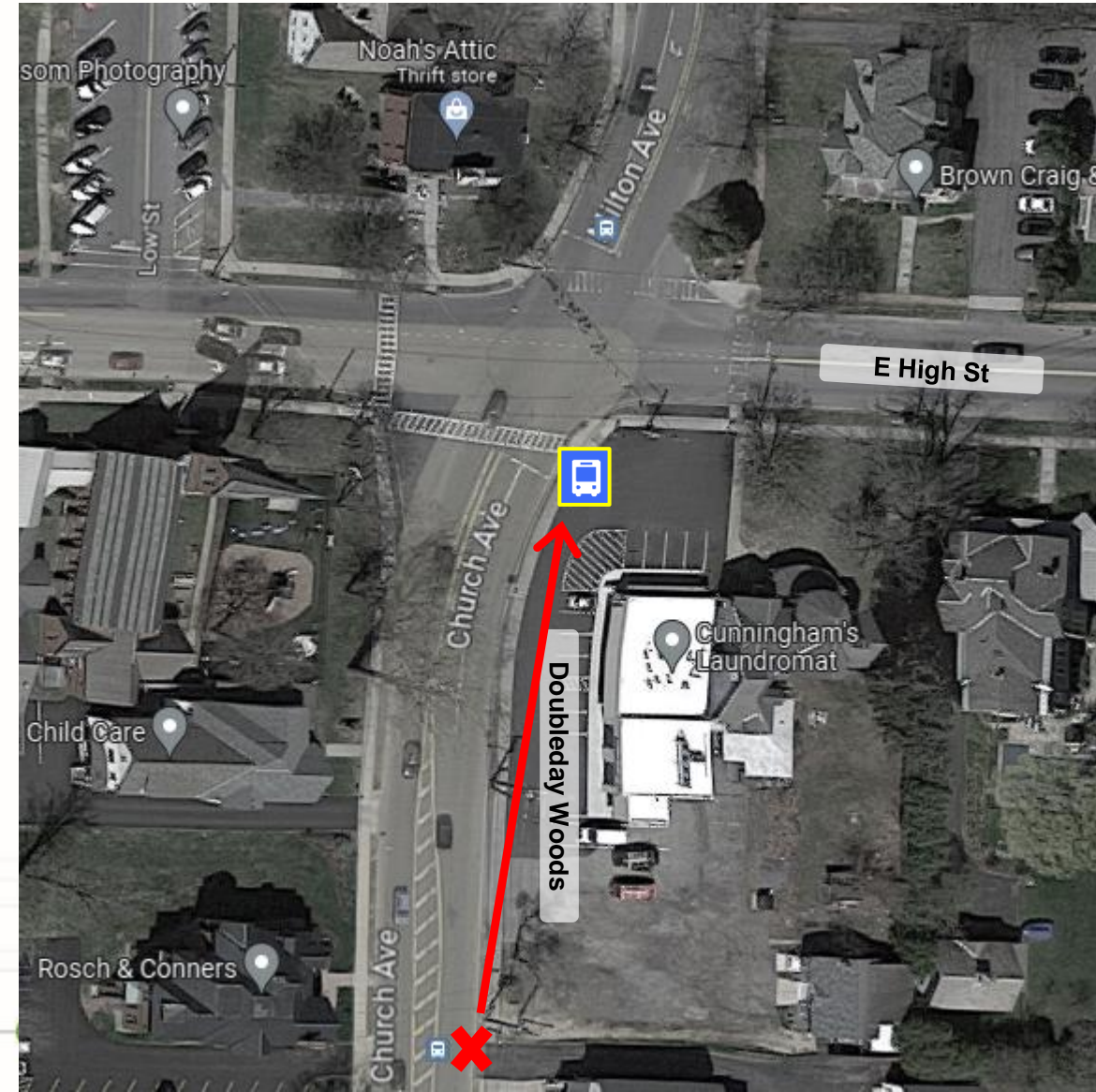
- Upgrades bench to a bus shelter near senior residential community
- Adds pedestrian ramps and crosswalk
- Shelter located at site of existing bench on city right-of-way



Concept Plan: Church & E High St

Benefits

- Relocate bus stop closer to intersection with crosswalks/safer area to disembark bus



Next Steps

- Feedback from NYSDOT and Village Trustees
- Complete design
- Incorporate into existing NYSDOT project (where possible)

