



FACT SHEET

State Superfund Program

Rickett's Dry Cleaners
2017-2019 Doubleday Avenue
Ballston Spa, NY 12020

Where to Find Information

Access project documents through the DECinfo Locator and at these location(s):

DECinfo Locator

<https://www.dec.ny.gov/data/DecDocs/546058/>

NYSDEC Region 5

1115 NYS Route 86, PO Box 296
Ray Brook, NY 12977
Attn: Nicole Hinze
Phone: (518) 897-1241
Hours: Weekdays, 8:30 am – 4:00 pm

Ballston Spa Public Library

21 Milton Avenue
Ballston Spa, NY 12020
Phone: (518) 885-5022

Who to Contact

Comments and questions are welcome and should be directed as follows:

Project-Related Questions

Nicole Hinze, Project Manager
NYSDEC
1115 NYS Route 86, PO Box 296
Ray Brook, NY 12977
(518) 897-1241
nicole.hinze@dec.ny.gov

Project-Related Health Questions

Angela Martin
NYSDOH
Empire State Plaza
Corning Tower, Room 1787
Albany, NY 12237
(518) 402-7860
bee@health.ny.gov

For more information about New York's State Superfund Program, visit:

www.dec.ny.gov/chemical/8439.html

February 2022

SITE No. 546058

NYSDEC REGION 5

Interim Remedial Measure to Begin

The New York State Department of Environmental Conservation (NYSDEC), in consultation with the New York State Department of Health (NYSDOH), is announcing an expedited cleanup of contamination at the Rickett's Dry Cleaners site ("site") located at 2017-2019 Doubleday Avenue, Ballston Spa, Saratoga County. Please see the map on page 3 for the site location. The expedited cleanup activities are expected to begin in February 2022 and last about two months. The activities will be performed by NYSDEC using the State Superfund.

- Access Interim Remedial Measure Work Plan and other project documents online through the DECinfo Locator:
<https://www.dec.ny.gov/data/DecDocs/546058/>
- Documents also are available at the location(s) identified at left under "Where to Find Information."

The site is listed as a class "2" site in the State Registry of Inactive Hazardous Waste Disposal Sites (list of State Superfund sites). A class 2 site represents a significant threat to public health or the environment; action is required.

Interim Remedial Measure (IRM) Work Plan: An IRM is a cleanup activity that may be performed when a source of contamination or exposure pathway (the way in which a person may contact contamination) can be effectively addressed without extensive investigation and evaluation.

The IRM Work Plan describes cleanup activities that include:

- Controlled demolition, including watering for dust control, of the on-site buildings to the concrete slab and off-site disposal of the demolition debris;
- All applicable state and local permits (e.g., demolition permit) will be obtained;
- Importation of clean material for use as backfill;
- Implementation of a Health and Safety Plan and Community Air Monitoring Plan during all ground intrusive and demolition activities; and
- Implementation of a Vibration Monitoring Plan as determined necessary by Condition Assessments performed at adjacent properties.

STATE SUPERFUND PROGRAM

Next Steps: Upon completion, a Construction Completion Report will be prepared that documents the activities that were performed.

The IRM will afford the NYSDEC greater access to investigate the site and fully delineate the nature and extent of contamination attributed to past operations on-site. Additional Remedial Investigation (RI) activities will be conducted after the completion of the IRM. These activities will include, but may not be limited to, installing and sampling soil borings to identify possible on-site sources of contamination and installing and sampling groundwater wells to monitor impacts from areas of concern.

NYSDEC will keep the public informed throughout the investigation and cleanup of the site.

Site Description: The 1.38-acre site is located in a suburban area of Ballston Spa. The property is bounded on the east by Doubleday Avenue (State Route 50), on the north and west by residential properties and Park Street, and on the south by the intersection of Doubleday Avenue and Park Street. The primary site use has historically been as a laundry and dry cleaners along with a small self-service car wash at the south end of the property. The dry cleaners were in operation for at least four decades. The operations at the site ceased in approximately 2013, and the site is currently unoccupied.

Additional site details, including environmental and health assessment summaries, are available on NYSDEC's Environmental Site Remediation Database (by entering the site ID, 546058) at:

<https://www.dec.ny.gov/cfm/external/index.cfm?pageid=3>

Summary of the Investigation: NYSDEC is performing an RI. Based on the preliminary results, the primary contaminants of concern at the site are chlorinated volatile organic compounds associated with prior on-site dry-cleaning operations. The environmental media affected are soil, groundwater, and soil vapor. Upon completion of the IRM, additional data will be collected as part of the RI, as necessary, to fully delineate

the nature and extent of site-related contamination. Thereafter, a Feasibility Study will be developed which identifies, screens and evaluates alternatives for cleanup. Once a preferred option for site cleanup is identified, a Proposed Remedial Action Plan will be released for public comment and a public meeting will be held.

State Superfund Program: New York's State Superfund Program (SSF) identifies and characterizes suspected inactive hazardous waste disposal sites. Sites that pose a significant threat to public health and/or the environment go through a process of investigation, evaluation, cleanup and monitoring.

NYSDEC attempts to identify parties responsible for site contamination and require cleanup before committing State funds.

For more information about the SSF, visit:

<https://www.dec.ny.gov/chemical/8439.html>

We encourage you to share this fact sheet with neighbors and tenants, and/or post this fact sheet in a prominent area of your building for others to see.

Stay Informed with DEC Delivers

Sign up to receive site updates by email:

www.dec.ny.gov/chemical/61092.html

Note: Please disregard if you already have signed up and received this fact sheet electronically.

DECinfo Locator

Interactive map to access DEC documents and public data about the environmental quality of specific sites:

<https://www.dec.ny.gov/pubs/109457.html>

STATE SUPERFUND PROGRAM

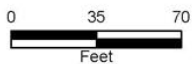
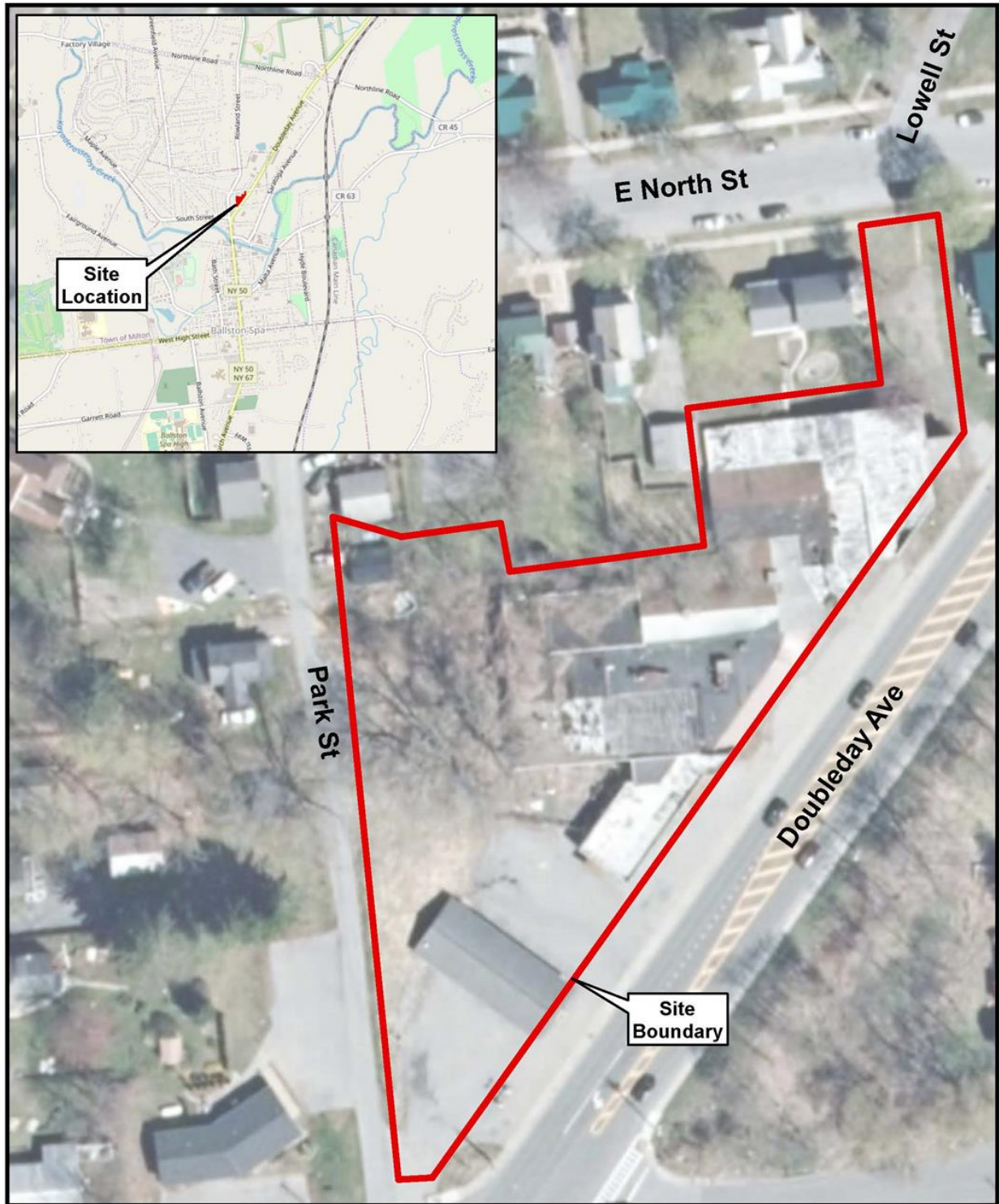


Figure 1
Site Map

2017 - 2019 Doubleday Ave.
Ballston Spa, Saratoga County
Site No. 546058



Department of
Environmental
Conservation