

Village of Ballston Spa

Pedestrian and Bicycle Master Plan

Presented by
Alanna Moran
Katherine Ember

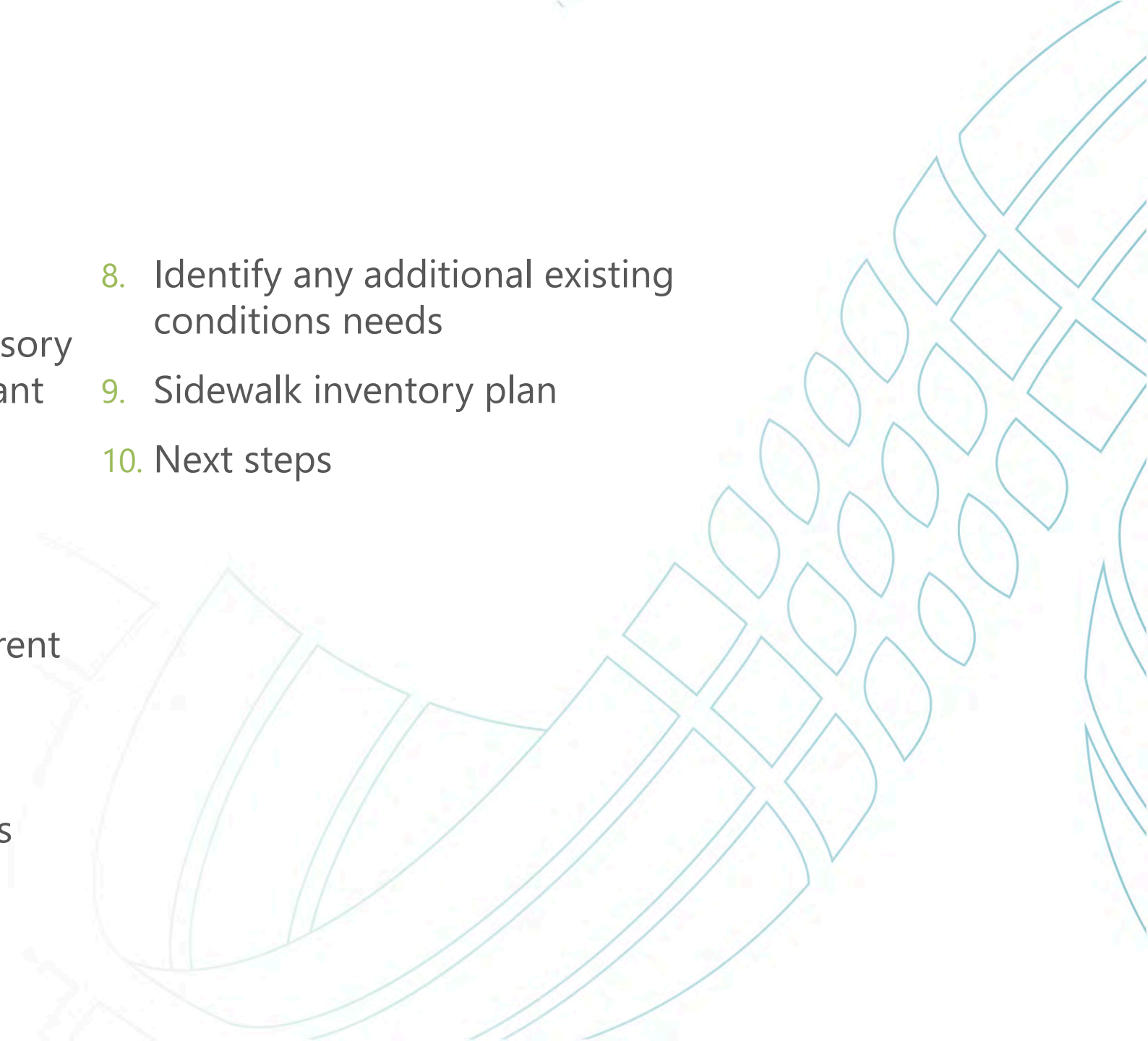
February 19, 2021

"A Village of Friends"



Ballston Spa Rotary

Agenda

1. Welcome and Project History
 2. Roles of the Village, Study Advisory Committee, CDTC, and consultant team
 3. Purpose and Need Statement
 4. Identify key issues
 5. Review of previous and concurrent planning studies/efforts
 6. Review study scope
 7. Public engagement plan/efforts
 8. Identify any additional existing conditions needs
 9. Sidewalk inventory plan
 10. Next steps
- 



Welcome and Project History



CHURCH AVENUE



MILTON AVE. FROM BLUE MILL BRIDGE



Roles of the Village, SAC, CDTC, and consultants

Roles & Responsibilities

Village

- Provide context and guidance to ensure that the Plan meets the intended goals

CDTC

- Act as the technical and project management conduit between the Village and the consultant team

Consultant Team

- Prepare meeting materials for Study Advisory Committee and public input sessions.
- Prepare draft and final sections of the plan for review.
- Facilitate SAC and public workshops and outreach events (including three focus groups)
- Quick-fire (10-minute) individual stakeholder Q & A phone/Zoom calls (up to 12)

Roles & Responsibilities

Stakeholder Advisory Committee (SAC)

- Manage the process and provide input on issues and existing conditions.
- Participate in six Study Advisory Committee meetings related to project implementation.
- Inform others in the Village about the process and ways they can be involved.
- Assist with setting up focus groups and public workshops/outreach events and attend at least one public input session.
- Review and comment on reports, designs, and other documents
- Keep elected officials and municipal officials informed about the planning process.
- Work with the Consultant Team, CDTC staff, and others to complete various volunteer-led tasks.



Purpose and Need Statement

Purpose and Need Statement

The intent of the Village of Ballston Spa Pedestrian and Bicycle Master Plan is to enhance the Route 50 corridor and surrounding area, promote economic development, improve safety, and create a connected and integrated multi-modal transportation network for users of all ages and abilities by providing clear direction on priority locations and design treatments for inclusion in striping, signing, modification, repaving, and reconstruction projects, based on a representative public input process.



Identify key issues

Key Issues

- Previous studies have informed many key issues
 - Village of Ballston Spa Economic Development Plan
 - Complete Streets Workshop
- Trade-offs
 - How to increase parking while provided dedicated space for bicyclists?
 - How does the community want to use their public space?
- Design standards and guidelines
 - Find flexibility within the guidelines while adhering to standards
- Retrofit situations
 - The built environment can cause roadblocks to preferred design
- Prioritization
 - Take advantage of available opportunities – even if the project isn't the top priority



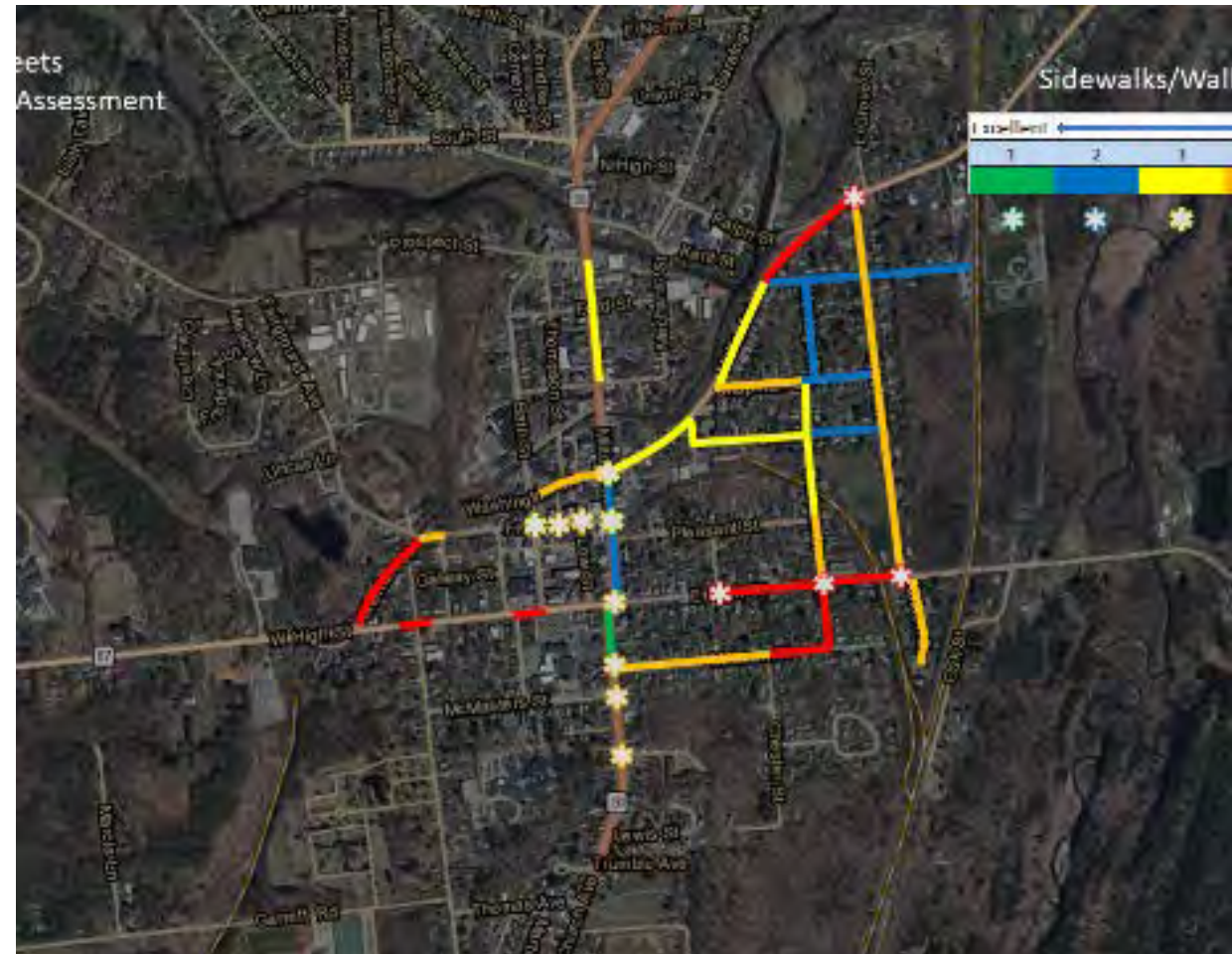
Review of previous and concurrent studies

Previous and Current Studies - Highlights

- Village of Ballston Spa Economic Development Plan (2020)
 - Infrastructure (including sidewalks and pedestrian crossings) was identified as one of the top 3 challenges facing the Village
 - Improve walkability/connectivity
 - Develop a sidewalk improvement plan
 - Increase parking in the Central Business District
 - Connect to the Zim Smith Trail
- Capital District Trails Plan
 - Connect the Zim Smith to Saratoga Spa State Park
- County Plan for Zim Smith Trail (the spine)
 - Feasibility study for heading north from Oak Street to the Saratoga Spa State Park
 - Fewest impediments to construction

Previous and Current Studies - Highlights

- Complete Streets Workshop
 - Education about complete streets
 - Initial field conditions inventory
 - Concept for connecting to the Zim Smith Trail
 - Public input centered specifically on pedestrian and bicyclist concerns





Review study scope

ARCA
35 FRANK

ELLIOTT
Property Services, LLC
Licensed Real Estate Broker

Daisy Dry Goods ANTQUES

Richard J. Conners
General Insurance
Stroever Agency, Inc.



Public engagement plan/efforts

Community Participation Plan

Publicizing Meetings/Workshops/Surveys

- Press Releases
- Postings for the Village Facebook, Library Facebook pages
- Village of Ballston Spa Website
- Project Website
- Mailings (TBD based upon Village's bulk mail schedule and available printing budget)
- Utilize school's monthly e-newsletter if available
- Flyers at the Village of Ballston Spa Library and other locations such as stores?

Community Participation Plan

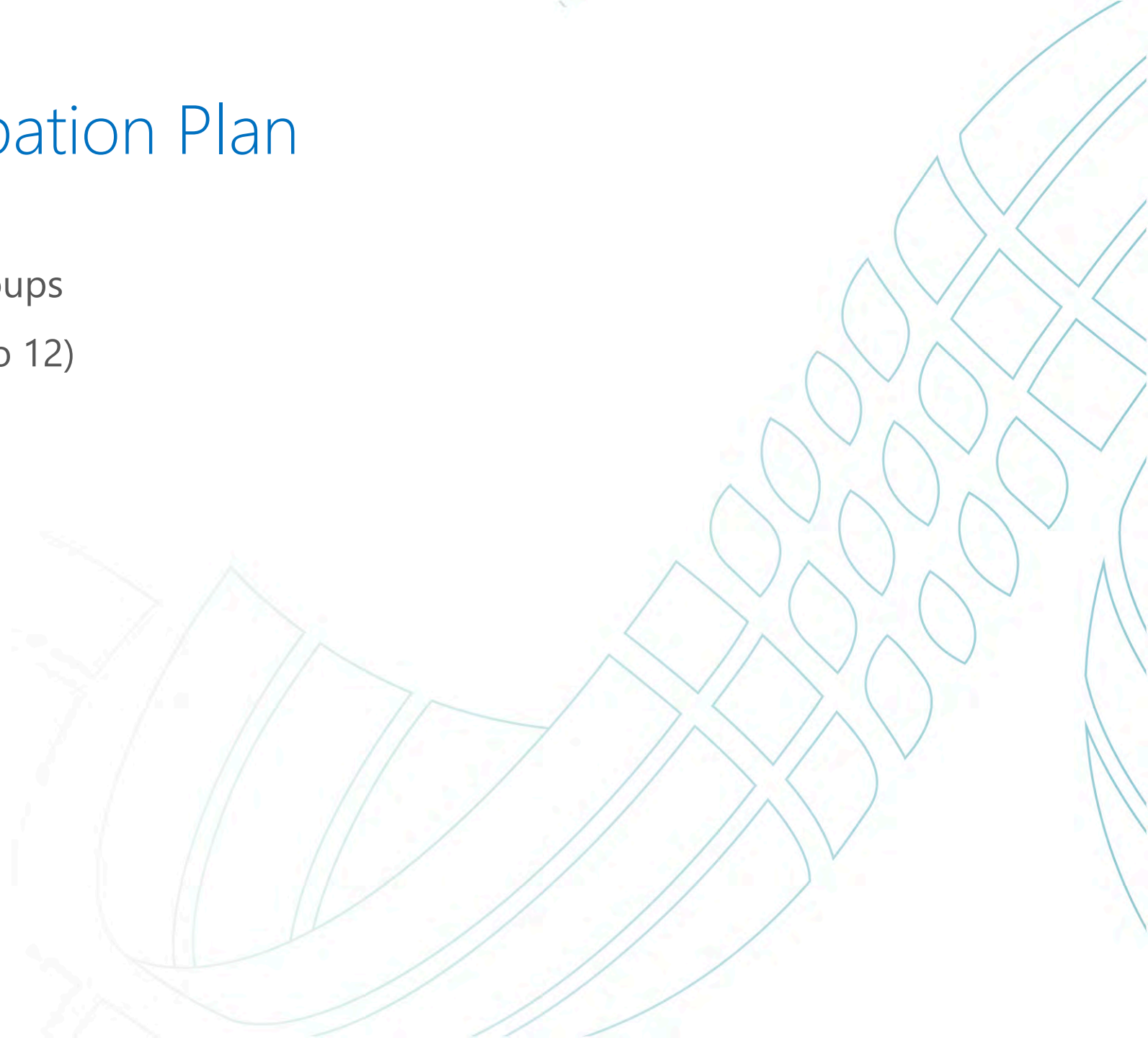
Publicizing Meetings/Workshops/Surveys

- Optional:
 - Print and post signs on municipal property (political sign size with a QR Code).
Remove after the event.
 - Borrow a VMS sign to place in a strategic location in Village to announce meetings (Village Pool?). Remove after the event.

Community Participation Plan

Stakeholder Outreach

- Three Stakeholder Focus Groups
- Stakeholder Interviews (up to 12)



Community Participation Plan

Stakeholder Outreach

- Possible Stakeholders:
 - Village Committees and Boards
 - Saratoga County Historical Society
 - Youth
 - Community Organizations
 - Library Staff or Friends Group
 - Business Community
 - Housing and Seniors
 - Focus Group on Zim Smith Trail
 - Others?

Community Participation Plan

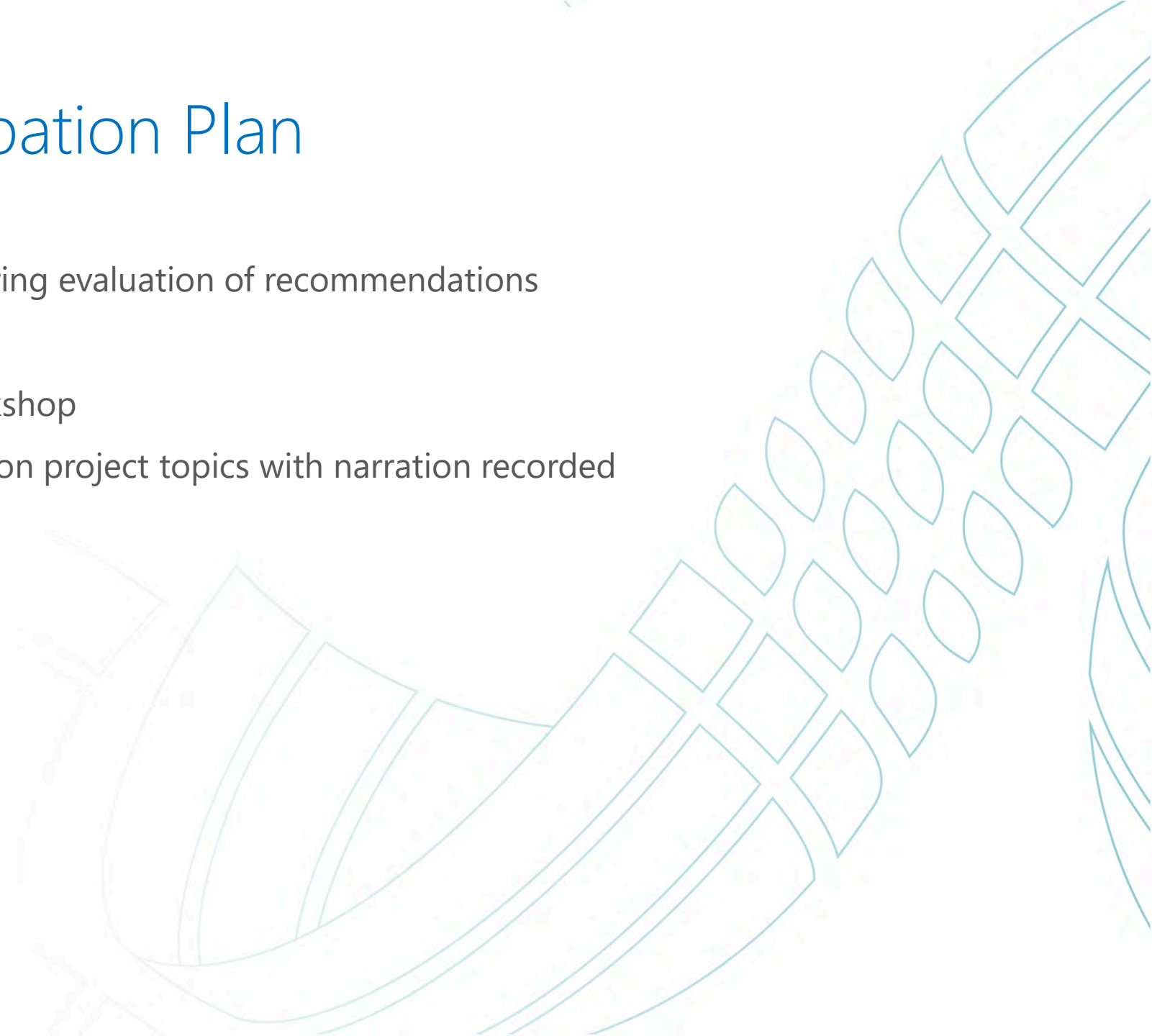
Public Input Sessions

- 1st Public Input Session (April & May 2021) – open house format
 - Opportunities: Concert in the Park, during the Farmers Market, or First Fridays
 - Pop-up bicycle and pedestrian improvements
- 2nd Workshop (October 2021) – open house format
- *Alternative - virtual as needed due to COVID-19 pandemic

Community Participation Plan

Virtual Alternatives

- Survey – later in the project during evaluation of recommendations
- E-newsletter
- Virtual Village Meeting or Workshop
- Short PowerPoint Presentation on project topics with narration recorded



Community Participation Plan

Printed Materials (budget permitting)

- Use Village mailing list of 750 addresses
- Newsletter article if there is a planned newsletter mailing
- Rack cards for Route 450 bus
- Bookmarks for Library distribution
- Postcards
- Business cards
- Flyers



Project Website

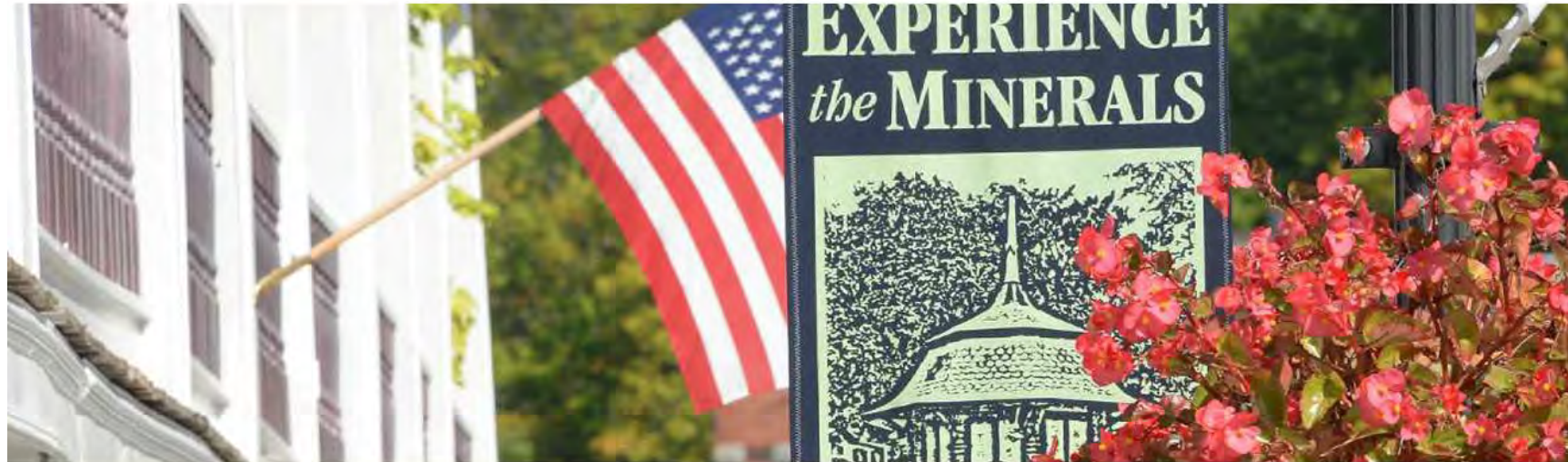
Connecting Friends
Ballston Spa PBMP
Pedestrian & Bicycle Master Plan

[Home](#)

[About the PBMP](#)

[Get Involved](#)

[Studies/Documents](#)



[Study News](#)

[MEETING NEWS](#)

[INTERACTIVE MAP](#)

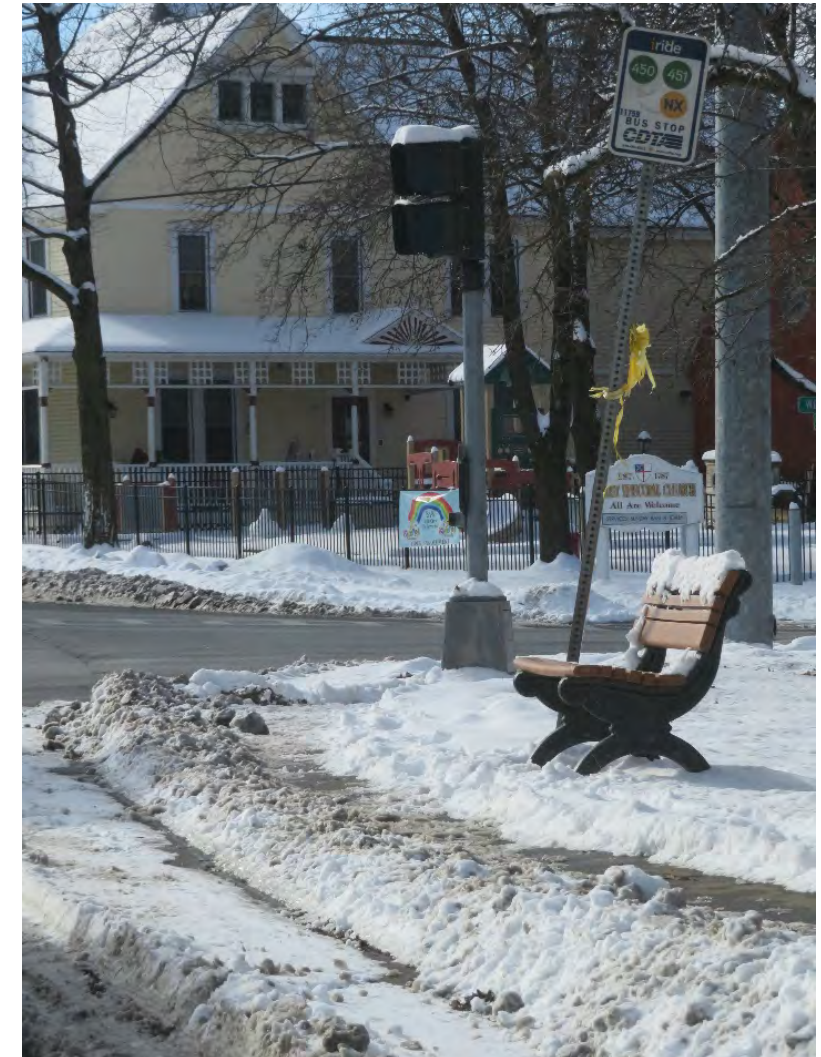
[Virtual Public Meeting held October 22nd](#)



Identify any additional existing conditions
needs

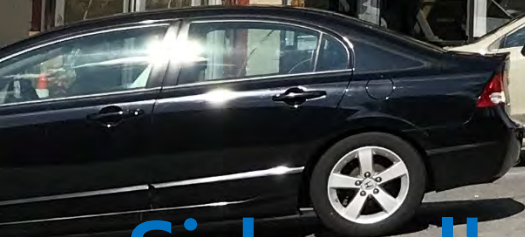
Existing Conditions Information

To be provided by		
Village of Ballston Spa	CDTC	Consultant
<ul style="list-style-type: none"> Information on relevant planned land use and/or transportation projects Volunteer Sidewalk-condition survey (condition rubric provided by CDTC) Relevant Demographic data and analysis Elected official contact information Right of way locations and adjacent easements, as available Current land use and zoning Existing on-street bicycle facilities and treatments, including signs Existing multi-use trails Locations of parks and Village green space, schools, and libraries Street and trail maintenance policies, the paving program/schedule, and winter snow removal On-street parking locations Bike rack locations 	<ul style="list-style-type: none"> Crash data Roadway ownership Curb-to-curb road widths Through-lane width for roads Roadway pavement conditions Roadway functional classification Shoulder widths on adjacent state roads Signalized intersections, including standard vs. multiple phasing Intersections and control type Location and surface material of sidewalks Sidewalk condition assessment rubric (Condition Assessment to be completed by Village volunteers) Bus route, stop locations and stop amenities Transit boardings and alightings by stop 	<ul style="list-style-type: none"> Topography Traffic volumes and speeds, as provided in the NYS Traffic Data Viewer One supplemental traffic count including class and speed data at a location to be determined by the SAC Up to six pedestrian and bicycle volume and movement counts – Assisted by Village volunteers Utility and railroad right of ways/locations Photographs depicting existing land uses, existing bicycle and pedestrian facilities, and street and traffic conditions, with relevant descriptions Widths of existing multi-use paths





Sidewalk inventory Plan





Sidewalk & Crosswalk Existing Conditions

Sidewalk Conditions

- Physical sidewalk conditions vary throughout the Village
- Sidewalk widths also vary throughout the Village
- Some blocks don't have sidewalks or have missing segments
- Snow clearance of sidewalks is also variable based upon a recent field view in January 2021 following a snowstorm
- Front Street and most of Route 50 were cleared well. Some blocks were not cleared, not cleared for entire sidewalk width, or cleared and covered again (Route 50)



Sidewalk Conditions – Malta Avenue



Sidewalk Conditions – Pine Street & Grove Street



Sidewalk Conditions – Pleasant Street



Sidewalk Conditions – Route 50



Sidewalk Conditions – Route 50



Sidewalk Conditions – Front Street & Low Street



Sidewalk Conditions – Washington Street



Sidewalk Conditions – Hyde Boulevard



Sidewalk Inventory Survey

- 4 sectors
- 4 categories



Village of Ballston Spa
Pedestrian and Bicycle Master Plan
Sidewalk Inventory Survey: Sector 1



Rating 4 – Fully Accessible

- Sidewalk is new or in like-new condition
- Sidewalk is level, no cracks, no faults, no obstructions
- Sidewalk is of adequate width (at least 4 feet wide)



Rating 3 – Mostly Accessible

- Sidewalk is almost in a new or like-new condition
- Sidewalk is level with adequate width (4-feet)
- Sidewalk may have minor cracks



Rating 2 – Partially Accessible

- Sidewalk may have small vertical faults larger than 1/2" but could potentially be beveled/repared
- Large cracks, inadequate width, small patches of spalling or another type of rough surface deterioration
- Small buildup of dirt/debris, creeping of vegetation between panels or cracks



Rating 1 – Not Accessible

- Sidewalk may be seriously uneven from faulting (greater than 1/2") that cannot be beveled/repared and will require replacement
- Inadequate width
- Serious accumulation of dirt/debris, establishment of vegetation or other obstructions





Next steps

Next Steps

- Finalize the project website
- Sidewalk inventory
- Complete the existing conditions assessment
- Finalize the public involvement plan



Jacob Beeman | jbeeman@cdtcmpo.org

Trustee Liz Kormos | trusteekormos@villageofballstonspa.org

Alanna Moran | amoran@vhb.com

